

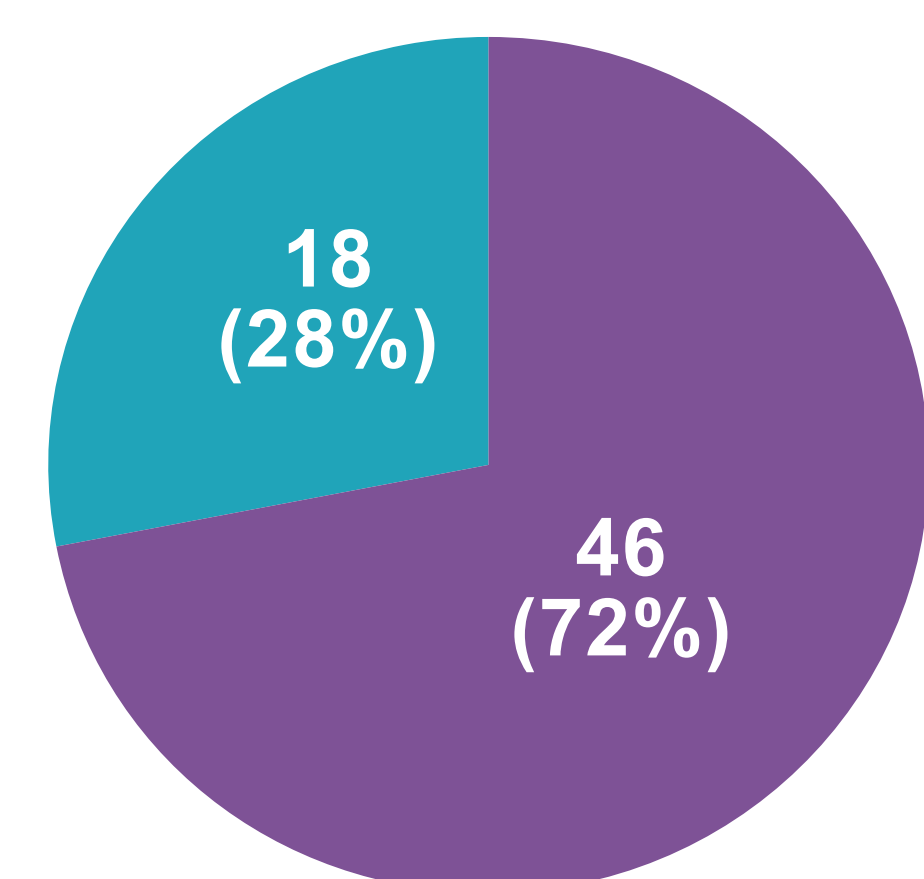
Not Reinventing the Wheel: Utilizing the HQCA Panel Report as a Snapshot for Your Panel

Project idea

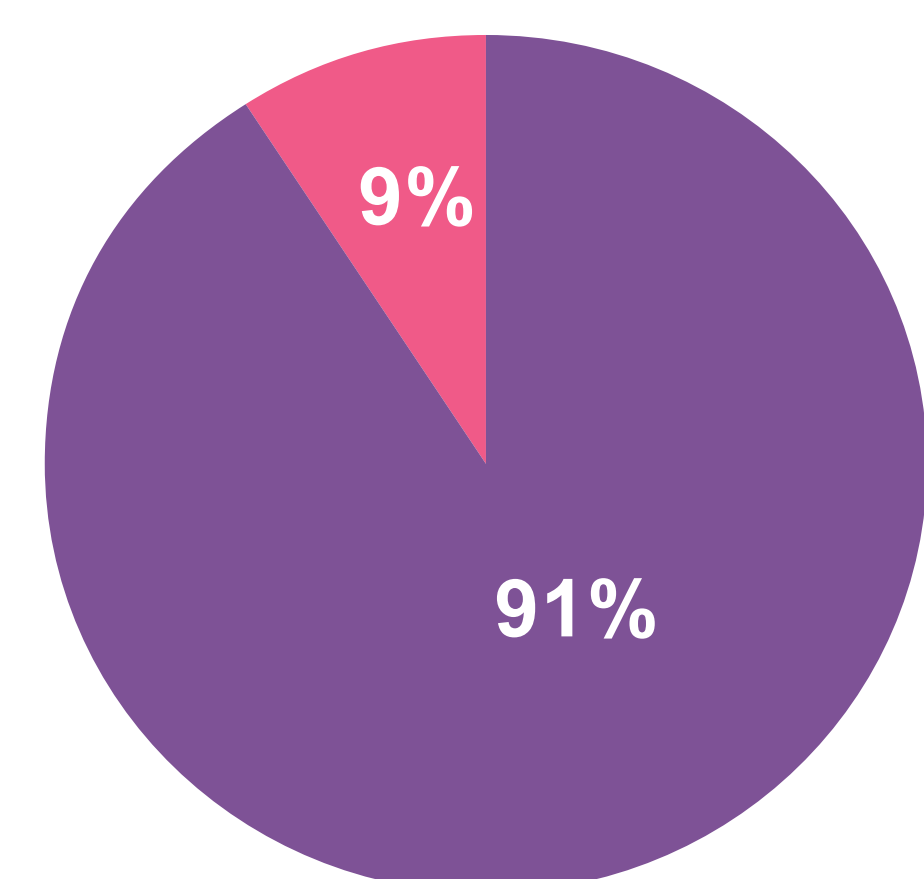
To leverage the HQCA report to enhance healthcare outcomes for at-risk diabetic patients. We focused on managing cholesterol, A1C, and urine ACR levels by implementing the notes feature in CHR. The goal of this project is to achieve a 20% enhancement in critical health measures within six months.

1 Project data

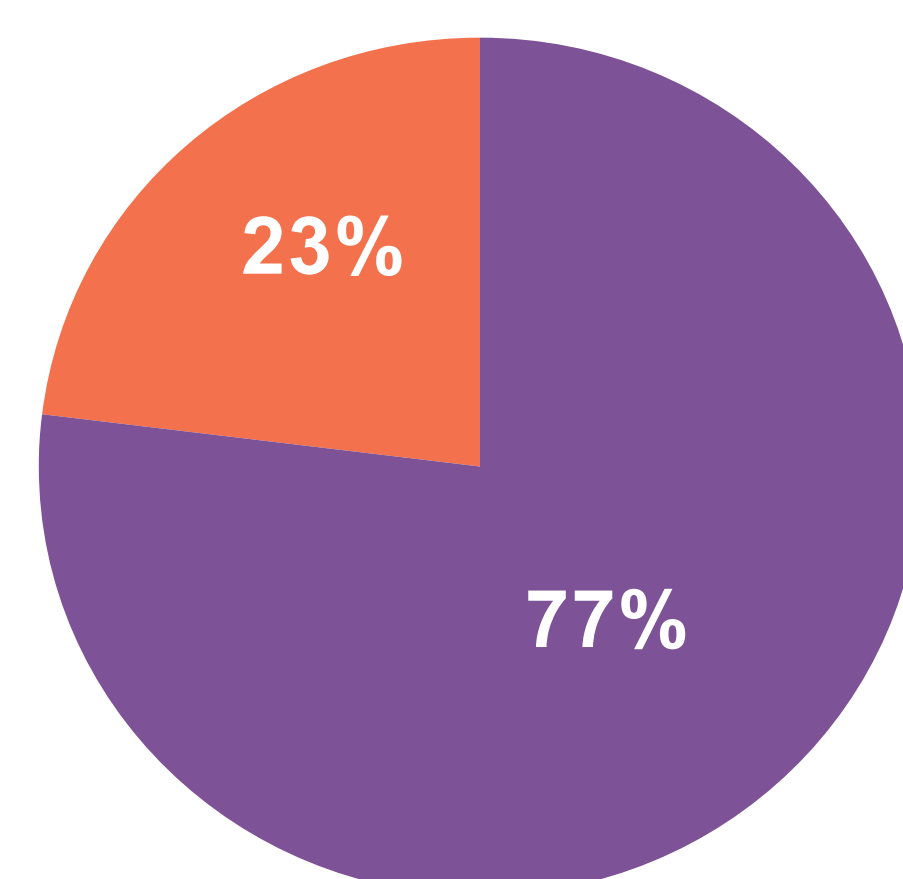
*Total panel = 1,048



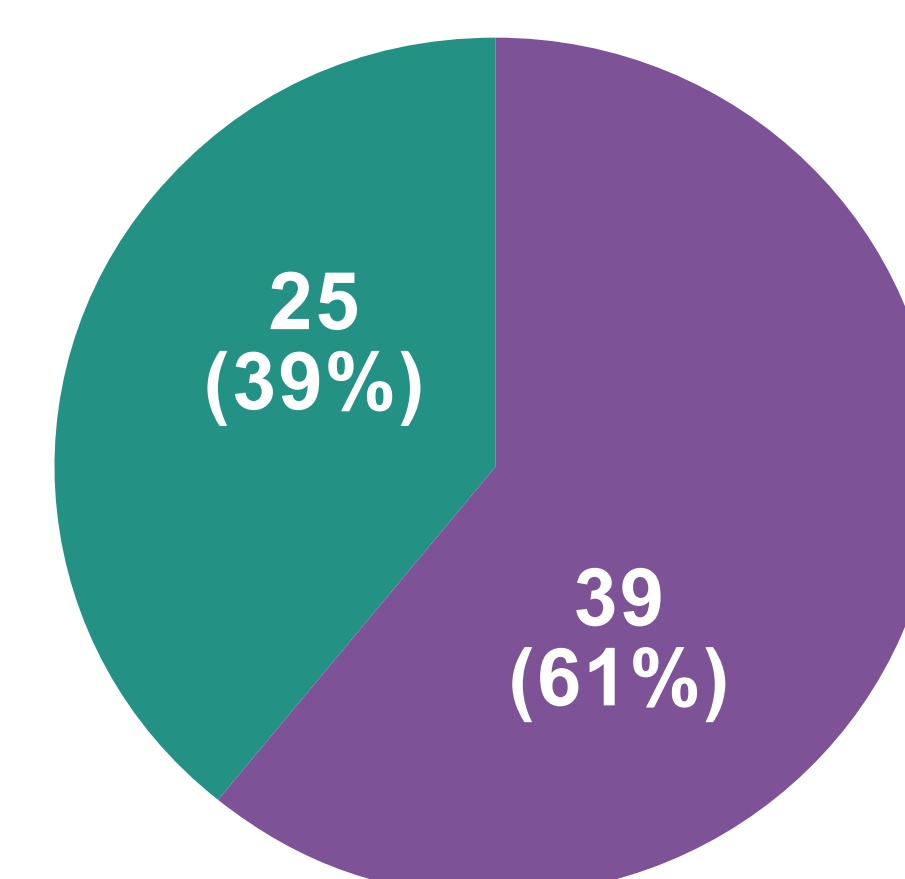
■ Total diabetic patients with A1C in the last 6 months
■ Total diabetic patients with no A1C in the last 6 months



■ Total diabetic patients with lipids in last 3 years
■ Total diabetic patients with no lipids in last 3 years

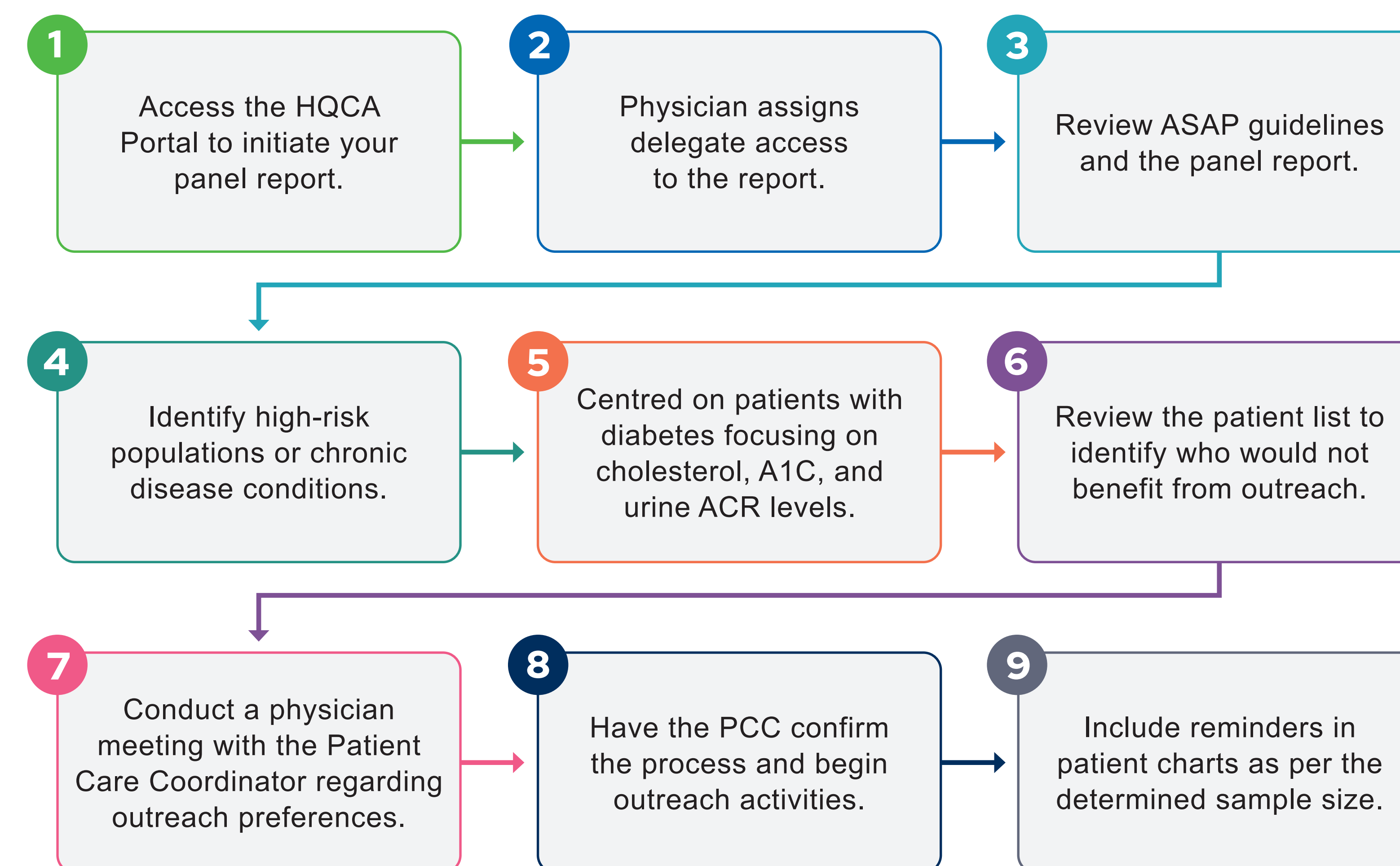


■ Total diabetic patients with eGFR in last 1 year
■ Total diabetic patients with no eGFR in last 1 year



■ Total diabetic patients with ACR in last 1 year
■ Total diabetic patients with no ACR in last 1 year

2 Current project



3 Getting here

- Use available resources for physicians without starting from scratch, leveraging past experience with COVID outreach.
- Address EMR transition challenges from Wolf to CHR, finding alternative ways to access panel information during the migration.
- Utilize the Health Quality Council of Alberta (HQCA) report to identify panel-related data.
- The HQCA report provides a snapshot of your panel in the form of a dashboard.
- It provides benchmarking data and informs quality improvement initiatives.

4 What's next

- Evaluate progress by re-pulling the dataset at 6 months to evaluate progress and screening.
- Analyze data trends and identify additional target populations.
- Create a report with success metrics, present recommendations for clinic-wide adoption with other providers.
- Meet PPIP requirements for Pillar No.1: Practice-driven quality improvement.
- Prepare a report summarizing key findings and insights for further action and improvement.

5 Project team



6 Key takeaways

Utilize the notes feature on the dashboard view

Take a proactive approach to patient screening and explore ways to elevate it to the next level

Evaluate and weigh your options between the HQCA report and the Discovery Report from the PCN